



Integrating Elite Athletes with a Disability

*Paul Kiteley
Athlete Services Manager
Victorian Institute of Sport*

BACKGROUND

- Based in Melbourne
- Non-residential
- Part of National Network
- Coordinates Academies in Regional Victoria

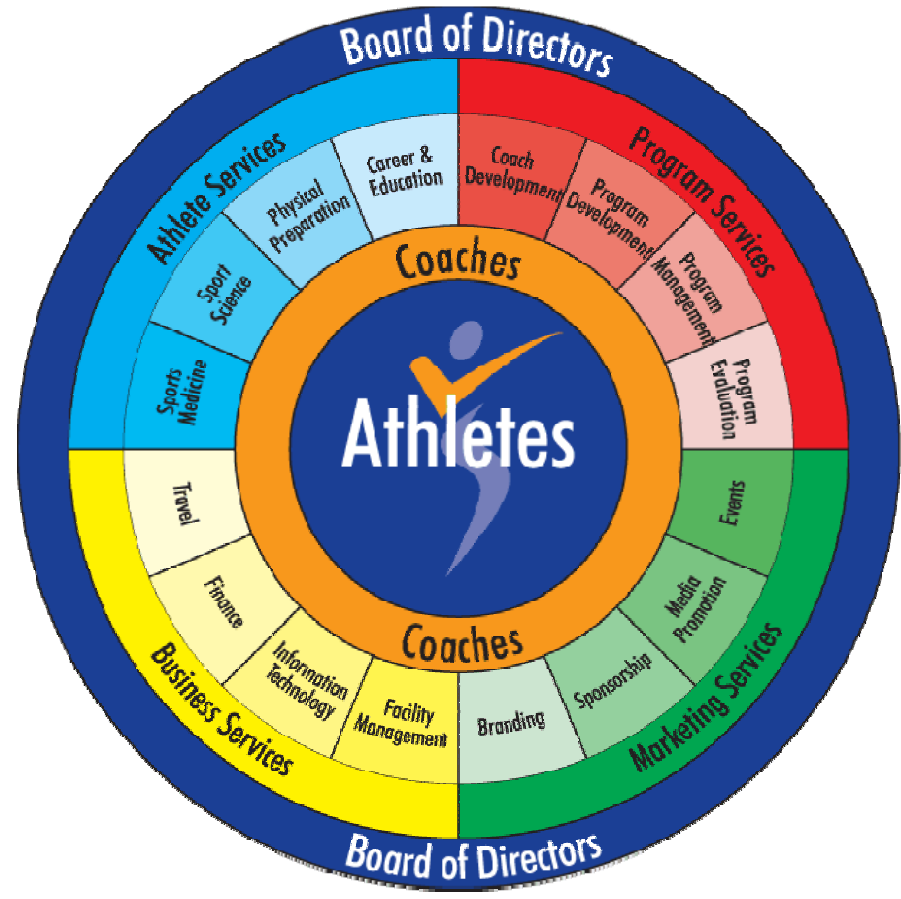








Organisational Structure



Australian Medal Tally Paralympic Games

Paralympic Games	Gold	Silver	Bronze	Total
Rome 1960	3	6	0	9
Tokyo 1964	11	10	9	30
Tel Aviv 1968	15	16	7	38
Heidelberg 1972	6	8	11	25
Arnhem 1980	13	22	22	57
New York 1984	47	51	45	143

Australian Medal Tally Paralympic Games

Paralympic Games	Gold	Silver	Bronze	Total
Seoul 1988	22	34	38	94
Barcelona 1992	24	27	26	77
Atlanta 1996	42	37	27	106
Sydney 2000	63 (21)	39 (6)	47 (12)	149 (39)
Athens 2004	26 (8)	38 (11)	36 (10)	100 (29)

*VIS contribution

Mainstream Sport integration

- VIS Programs – Tier 1
- Integrated sports

Athletics

Baseball

Cricket

Cycling

Golf

Gymnastics

Hockey

Netball

Rowing

Soccer

Squash

Swimming

Tennis

Triathlon



COOPERATIVE RELATIONSHIPS

- State and National Sporting Organisations
- State and National Institutes of Sport
- Governments and Peak Agencies
- Schools and Universities
- Sporting Clubs
- Private Clinics and Practitioners



DELIVERY OF SERVICES TO EAD ATHLETES



- Empowered and proactive athletes
- Shared knowledge base
- Collaboration and communication
- Quality Personnel available

Commonwealth Games EAD Coach Development Program

- 25 Coaches from 12 Developing Nations
- Part of the Commonwealth Games Legacy program
- Education delivered by Athletes, Coaches and specialist service providers



Participating Countries

- Papua New Guinea
- Fiji
- Samoa
- Tonga
- Vanuatu
- Lesotho
- Mauritius
- Tanzania
- Jamaica
- Sri Lanka
- Bangladesh
- Cameroon



EAD Coach Program outline

- general coaching principles
- “inclusive” strategies
- sport specific workshops
Athletics, Swimming,
Powerlifting, Table Tennis
- physical preparation
with minimal equipment

